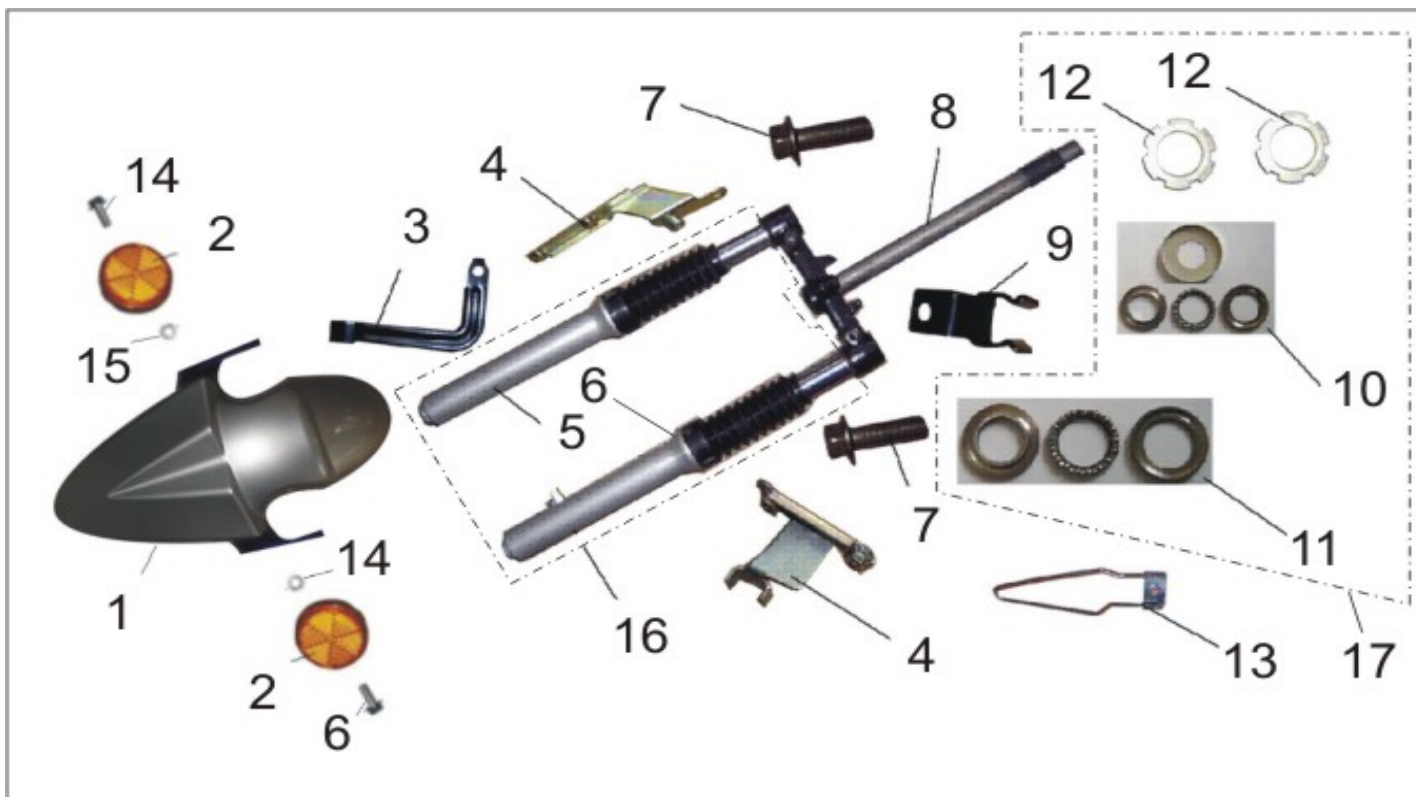




Item	P/N	Description
1	RS125-B01.01	Mirror Set (Left & Right)
2	RS125-B01.02	Left Grip
3	RS125-B01.03	Left Switch Assy
4	RS125-B01.04	Rear Handlebar Cover
5	RS125-B01.05	Right Switch Assy
6	RS125-B01.06	Handlebar
7	RS125-B01.07	Rear Brake Cable
8	RS125-B01.08	Throttle Cable
11	RS125-B01.11	Right Grip

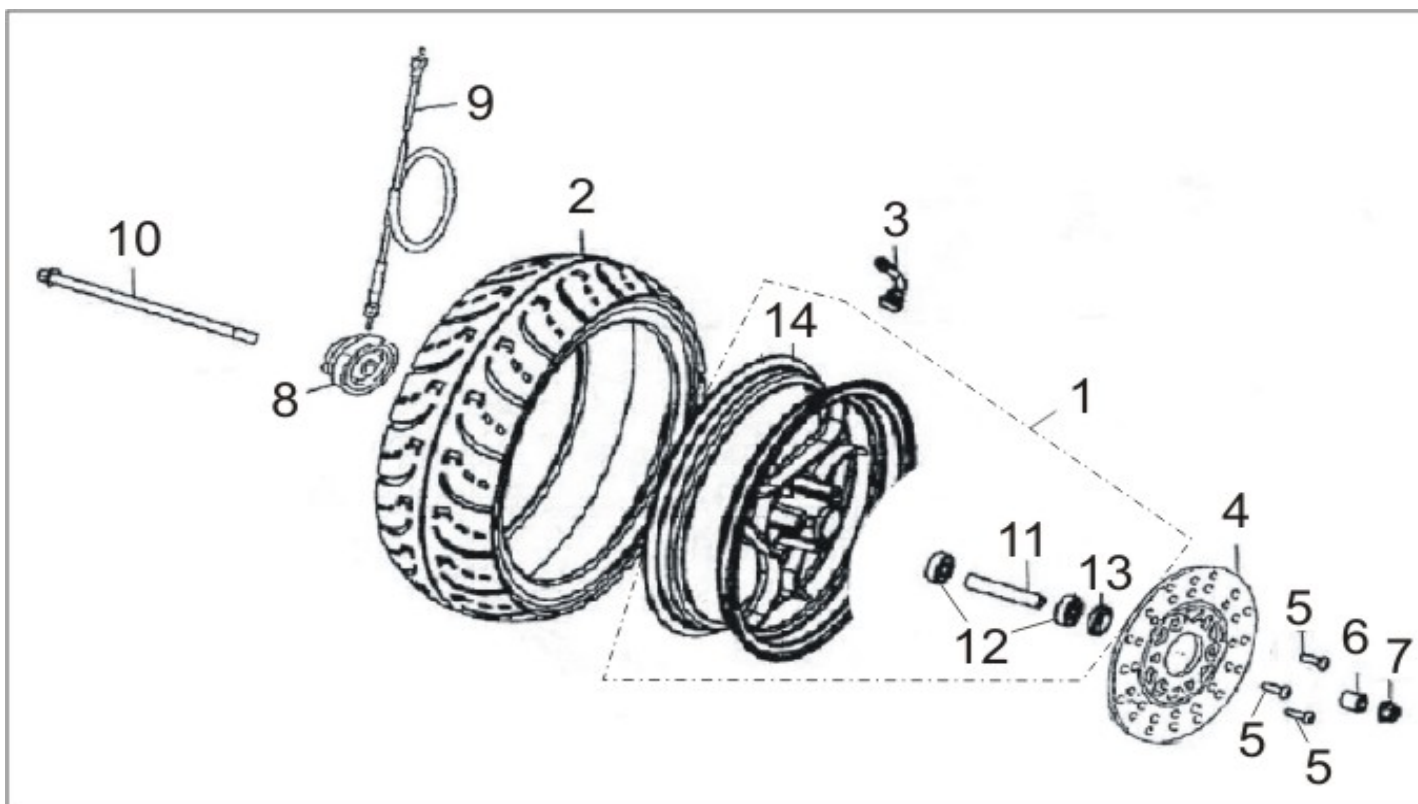


(Click line item in left column for more information)

(Prices and specifications subject to change)

Item	P/N	Description
1	RS125-B02.01BLU	Front Fender - Blue
1	RS125-B02.01SLV	Front Fender - Silver
2	TNG-B11.02	Reflector, 2-3/8" Dia, Amber, DOT
3	RS125-B02.03	Bracket
4	RS125-B02.04	Front Fender Bracket
8	RS125-B02.08	Steering Column
9	RS125-B02.09	Bracket

10	RS125-B02.10	Upper Bearing Set
11	RS125-B02.11	Lower Bearing Set
12	RS125-B02.12	Locknut
13	RS125-B02.13	Guide Clip
16	RS125-B02.16	Front Shock Absorber Set
17	RS125-B02.17	Upper and Lower Bearing Set

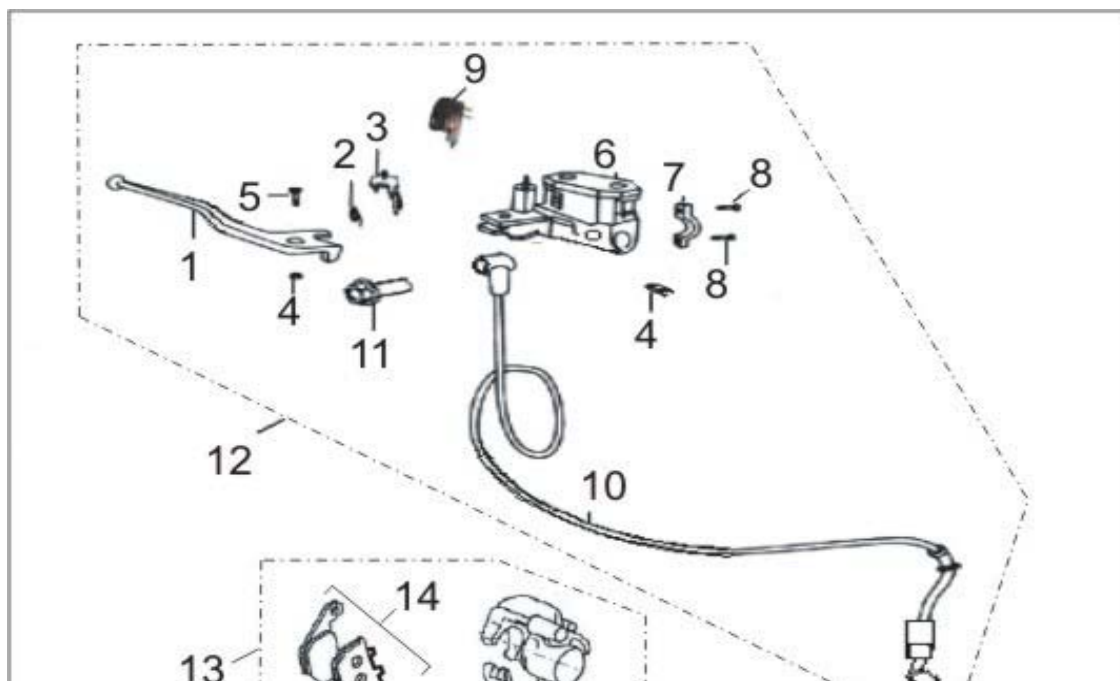


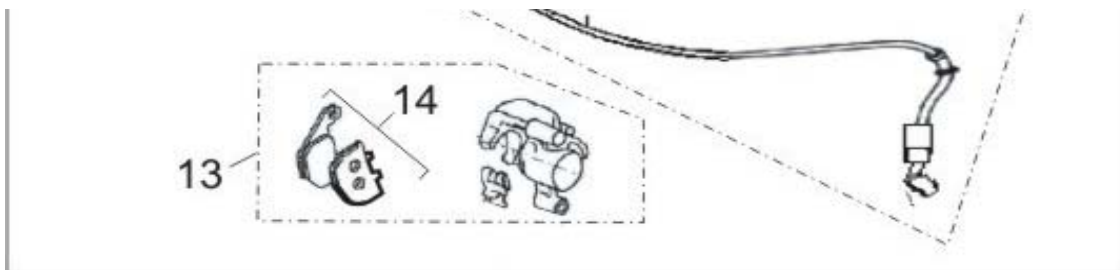
(Click line item in left column for more information)

(Prices and specifications subject to change)

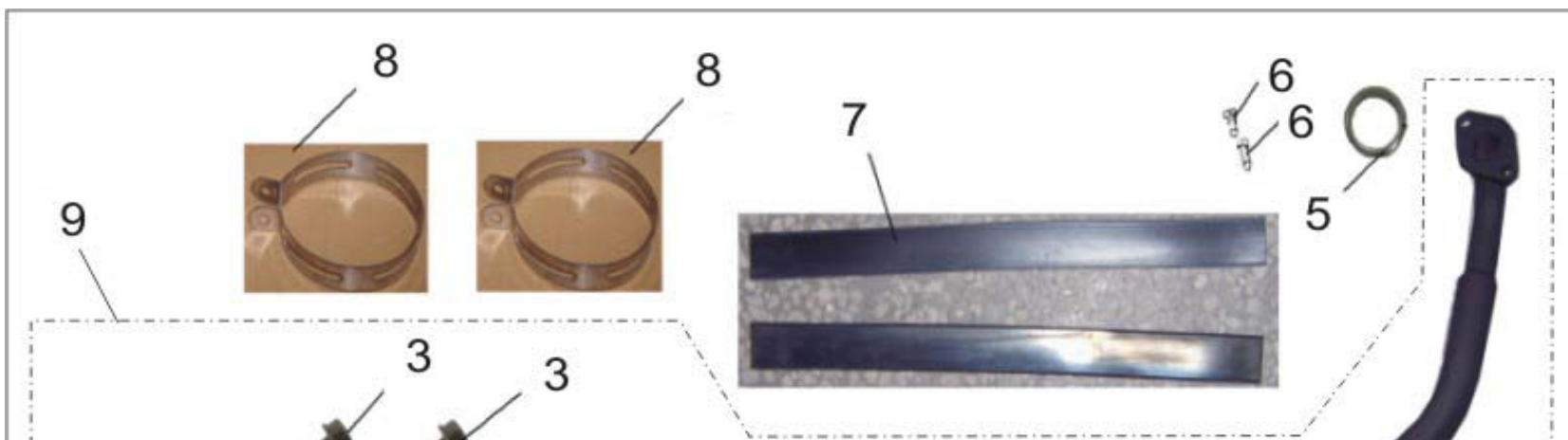
Item	P/N	Description
------	-----	-------------

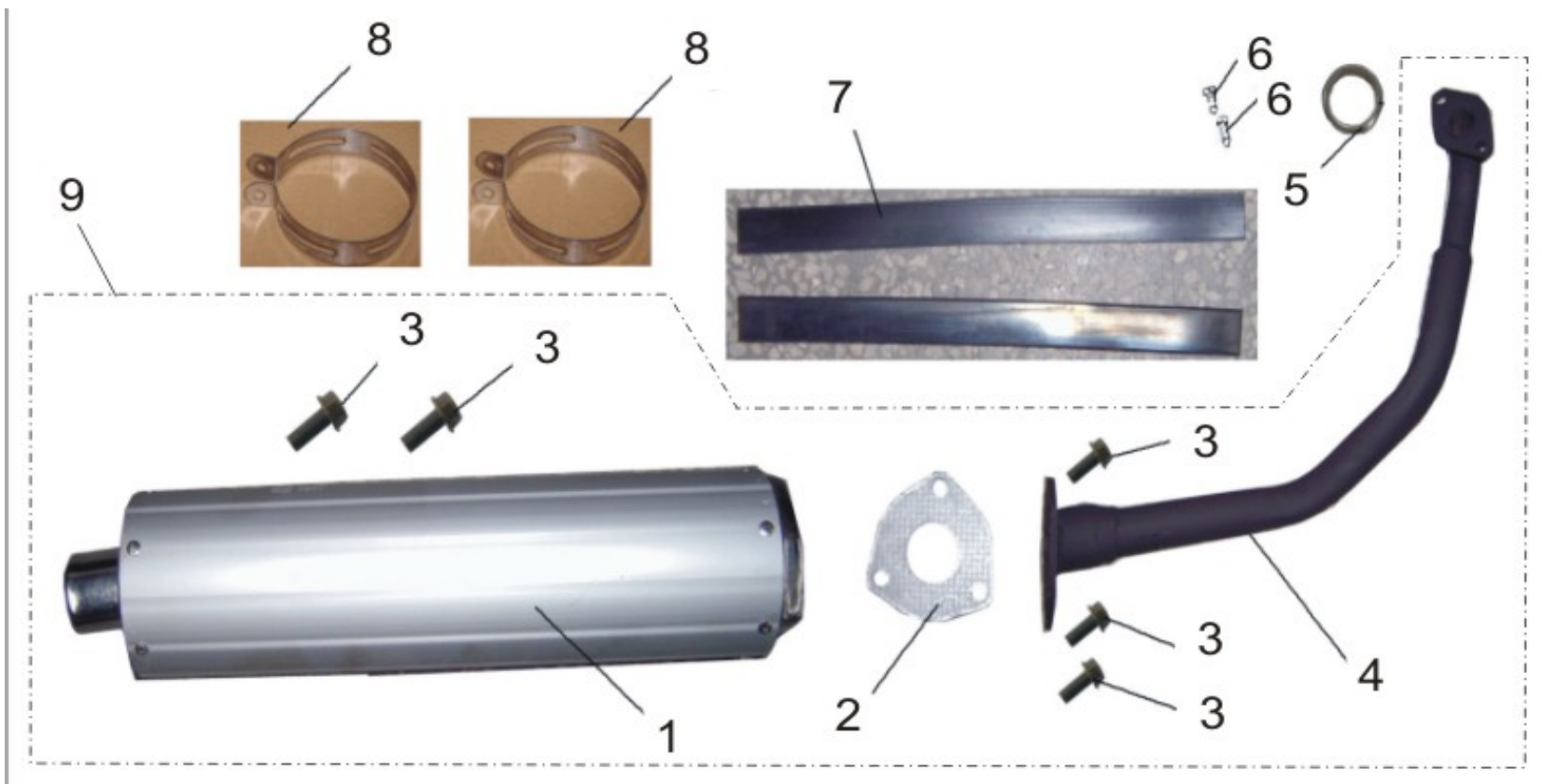
2	RS125-B03.02	Front/Rear Tire 120/70-12
4	RS125-B03.04	Front Brake Rotor
5	RS125-B03.05	Brake Disc Bolt </td
6	RS125-B03.06	Collar, Front Axle
8	RS125-B03.08	Speedometer Pickup
9	RS125-B03.09	Speedometer Cable
10	RS125-B03.10	Front Axle
11	RS125-B03.11	Spacer
12	RS125-B03.12	Ball Bearing
13	RS125-B03.13	Seal
14	RS125-B03.14	Front Wheel Rim





Item	P/N	Description
1	RS125-B04.01	Right Brake Lever
2	RS125-B04.02	Return Spring
3	RS125-B04.03	Connecting Socket
6	RS125-B04.06	Master Cylinder
9	RS125-B04.09	Switch, Front Brake
11	RS125-B04.11	Bolt, Oil Inlet
12	RS125-B04.12	Disk Brake Front
13	RS125-B04.13	Front Caliper Assy
14	RS125-B04.14	Front Brake Pad Set

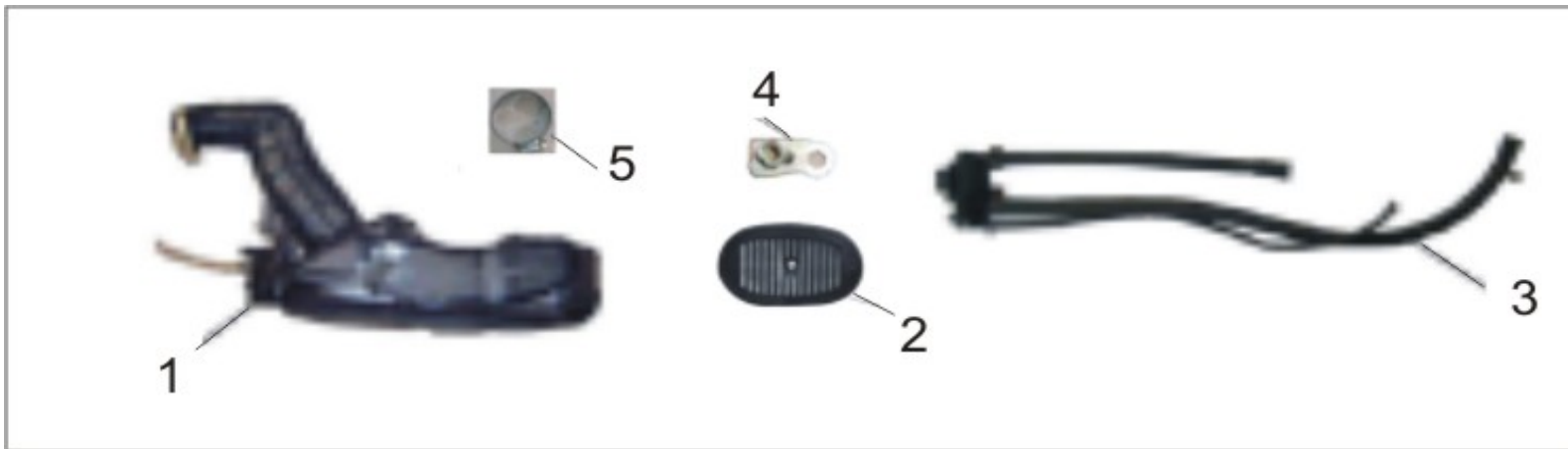




(Click line item in left column for more information)

(Prices and specifications subject to change)

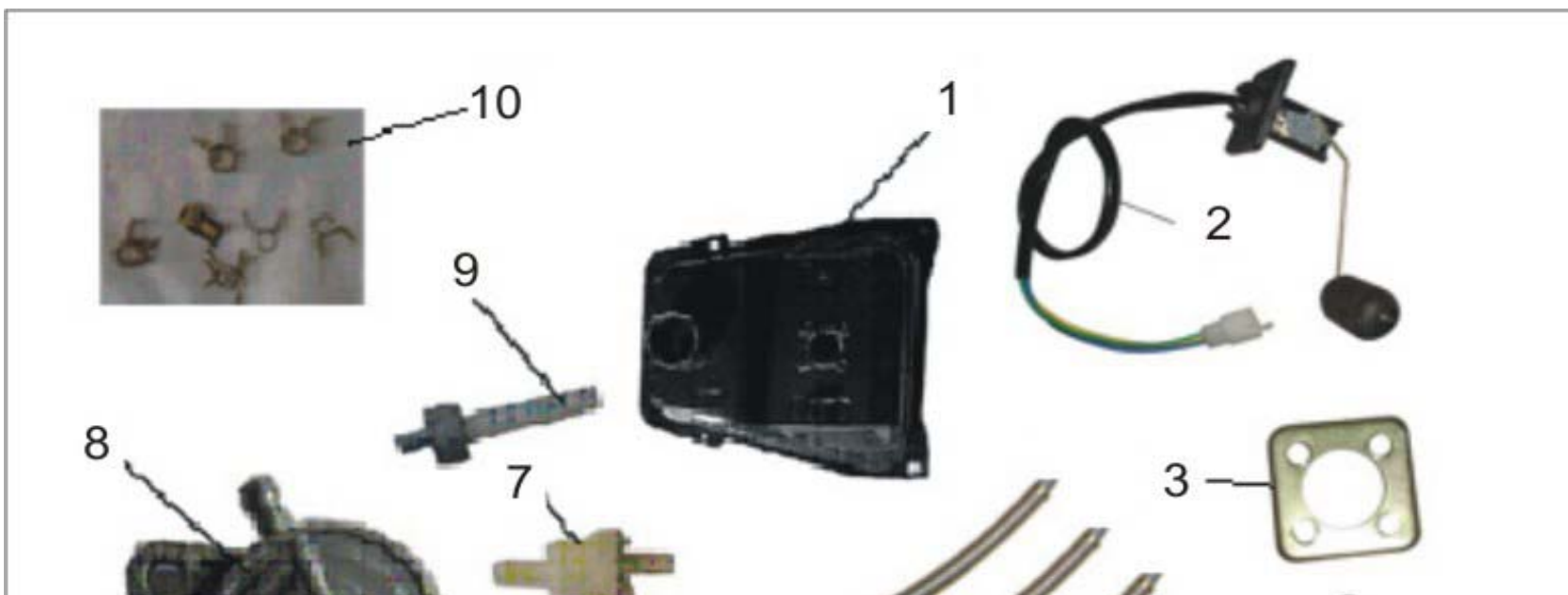
Item	P/N	Description
5	125T-E03.22	Exhaust Pipe Sealing Ring
7	LS49-B25.12	Clamp Cushion
8	LS49-B25.11	Muffler Clamp
9	RS125-B05.09	Muffler Assy

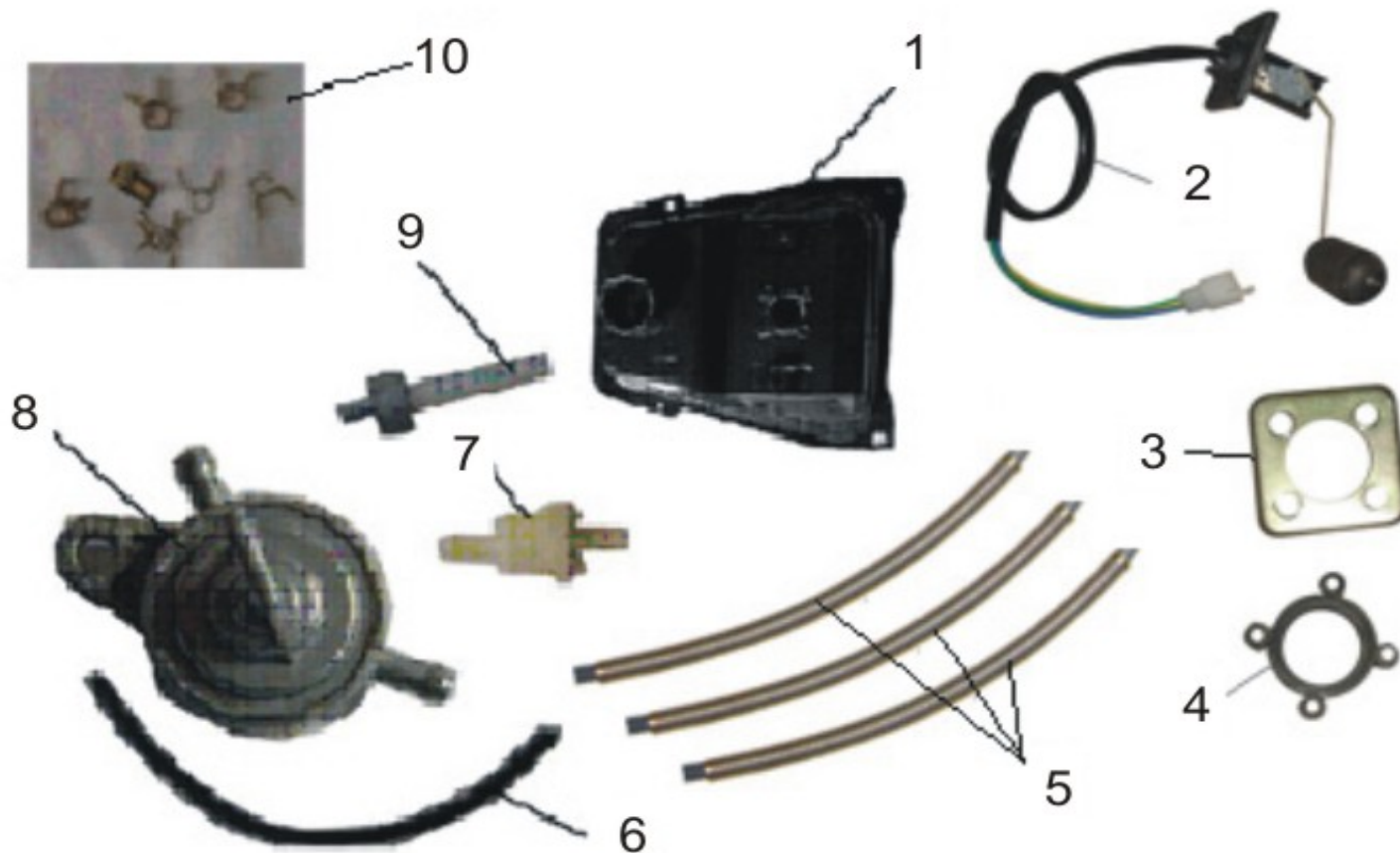


(Click line item in left column for more information)

(Prices and specifications subject to change)

Item	P/N	Description
1	RS125-B06.01	Air Cleaner Assy
2	RS125-B06.02	Header Pipe
3	RS125-B06.03	Secondary Air System
4	RS125-B06.04	Air Filter Frame





(Click line item in left column for more information)

(Prices and specifications subject to change)

Item	P/N	Description
1	RS125-B07.01	Fuel tank
2	RS125-B07.02	Fuel Sending Unit
7	VN49-B07.17	Fuel Filter
8	VN49-B07.04	Petcock
9	RS125-B07.09	Tank Filter





Item	P/N	Description
1	RS125-B08.01	Carburetor Access Cover
2	RS125-B08.02	Seat Storage Compartment
3	RS125-B08.03	Seat Box Front Cover
4	RS125-B08.04	Spark Plug Access Cover
5	RS125-B08.05	Seat

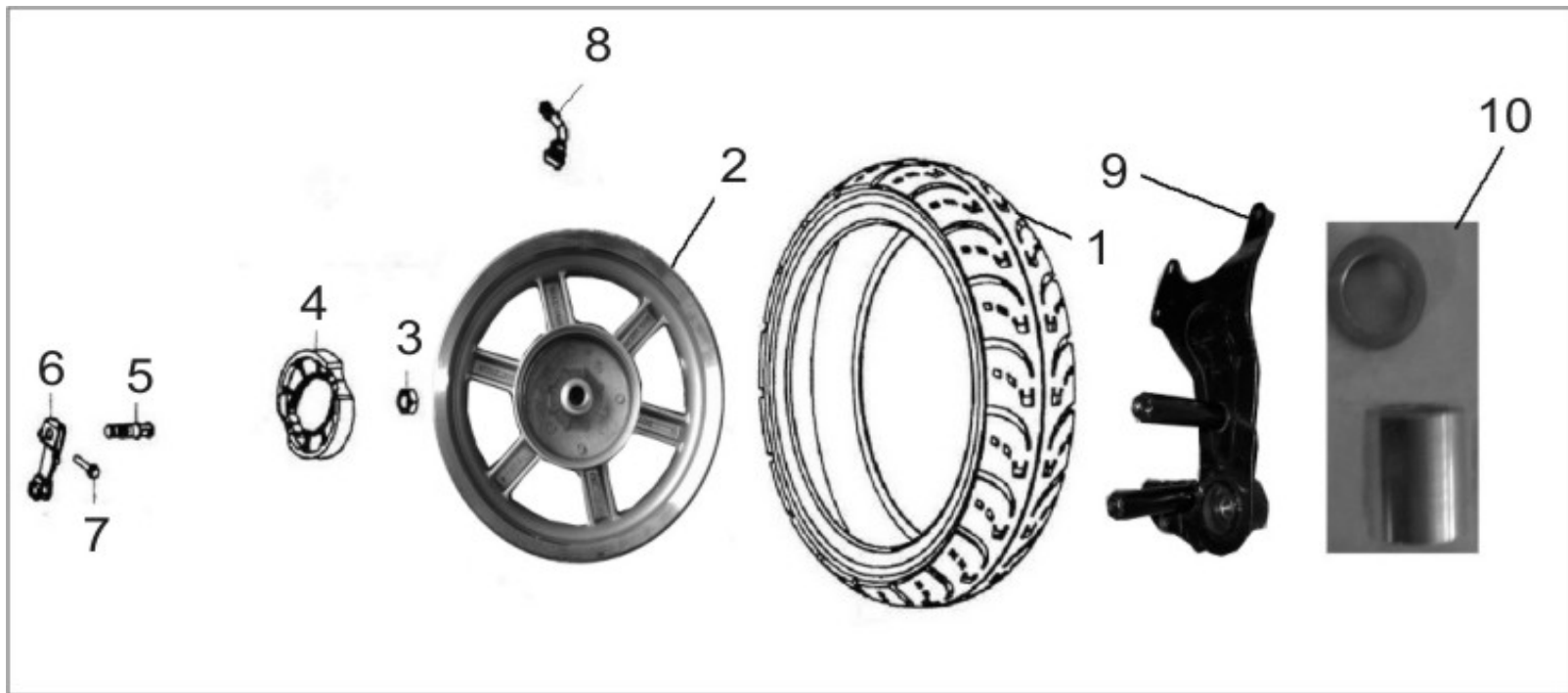
6	RS125-B08.06	Seat Lock Bracket
7	RS125-B08.07	Seat Lock Cable



(Click line item in left column for more information)

(Prices and specifications subject to change)

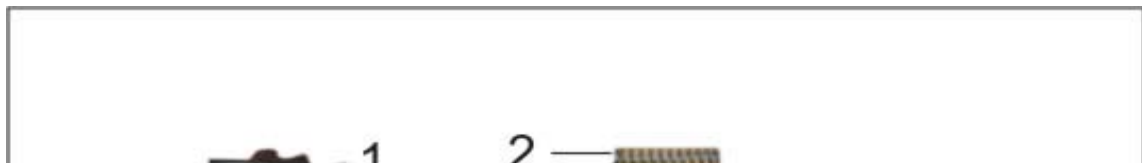
Item	P/N	Description
1	RS125-B09.01BLU	Rear Rack - Blue
1	RS125-B09.01SLV	Rear Rack - Silver

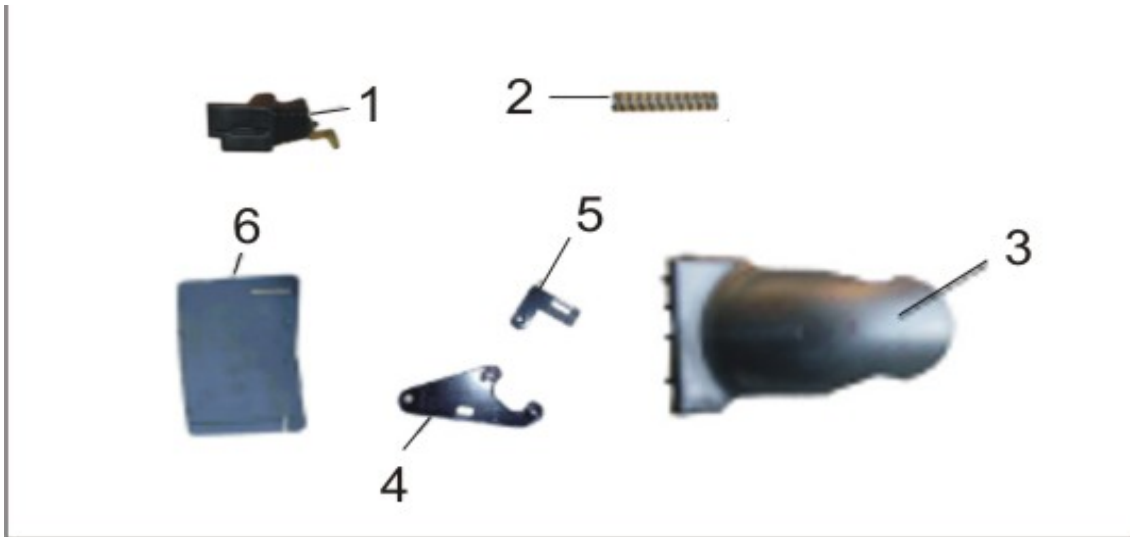


(Click line item in left column for more information)

(Prices and specifications subject to change)

Item	P/N	Description
1	RS125-B10.01	Rear Tire 130/70-12
2	RS125-B10.02	Rear Wheel Rim
4	RS125-B10.04	Brake Shoe Set
5	RS125-B10.05	Cam, Rear Brake
6	RS125-B10.06	Rear Brake Cam Lever
9	RS125-B10.09	Mounting Bracket
10	RS125-B10.10	Spacer Set

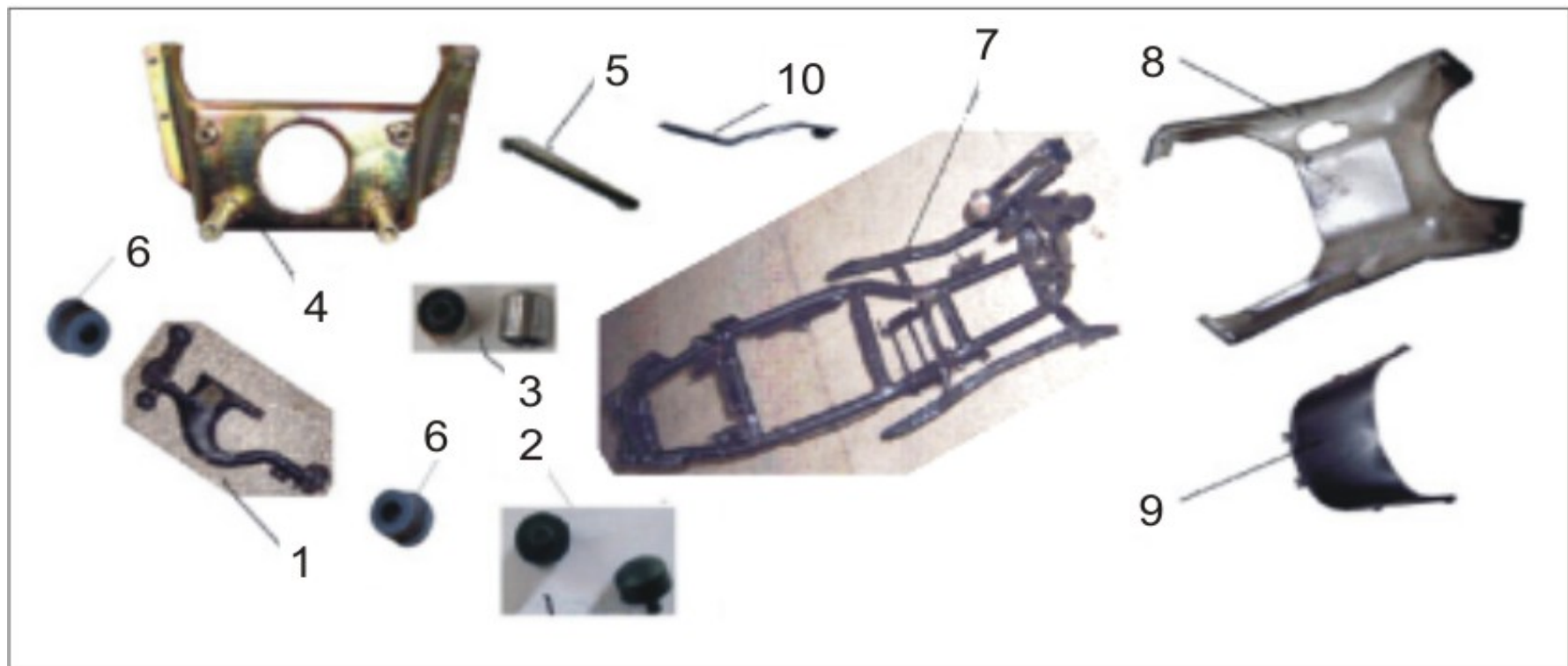




(Click line item in left column for more information)

(Prices and specifications subject to change)

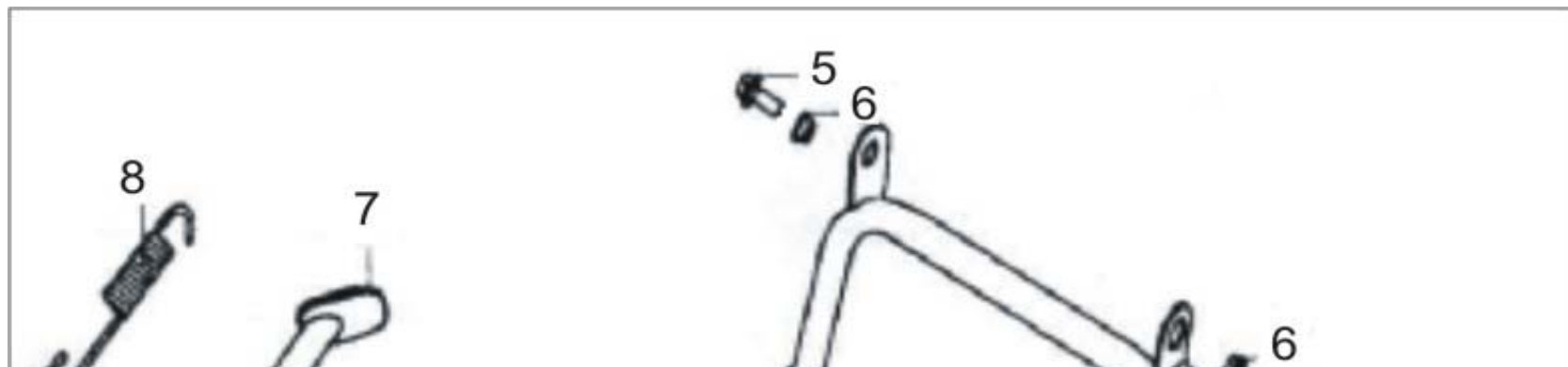
Item	P/N	Description
1	RS125-B11.01	Rear Brake Protector
2	RS125-B11.02	Rear Brake Return Spring
3	RS125-B11.03	Rear Inner Fender
4	RS125-B11.04	Inner Fender Bracket, Large
5	RS125-B11.05	Inner Fender Bracket, Small
6	RS125-B11.06	Rubber Seal

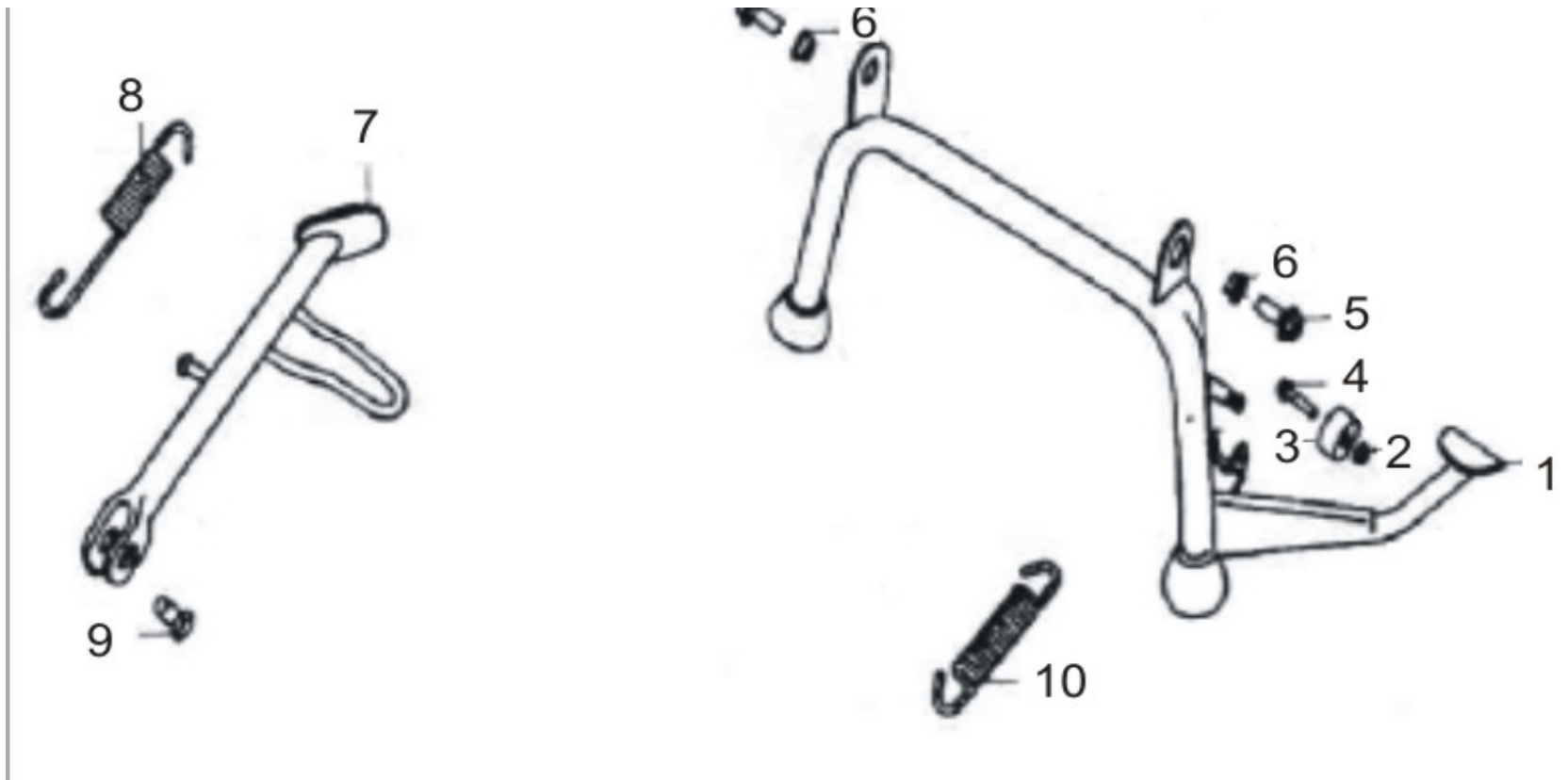


(Click line item in left column for more information)

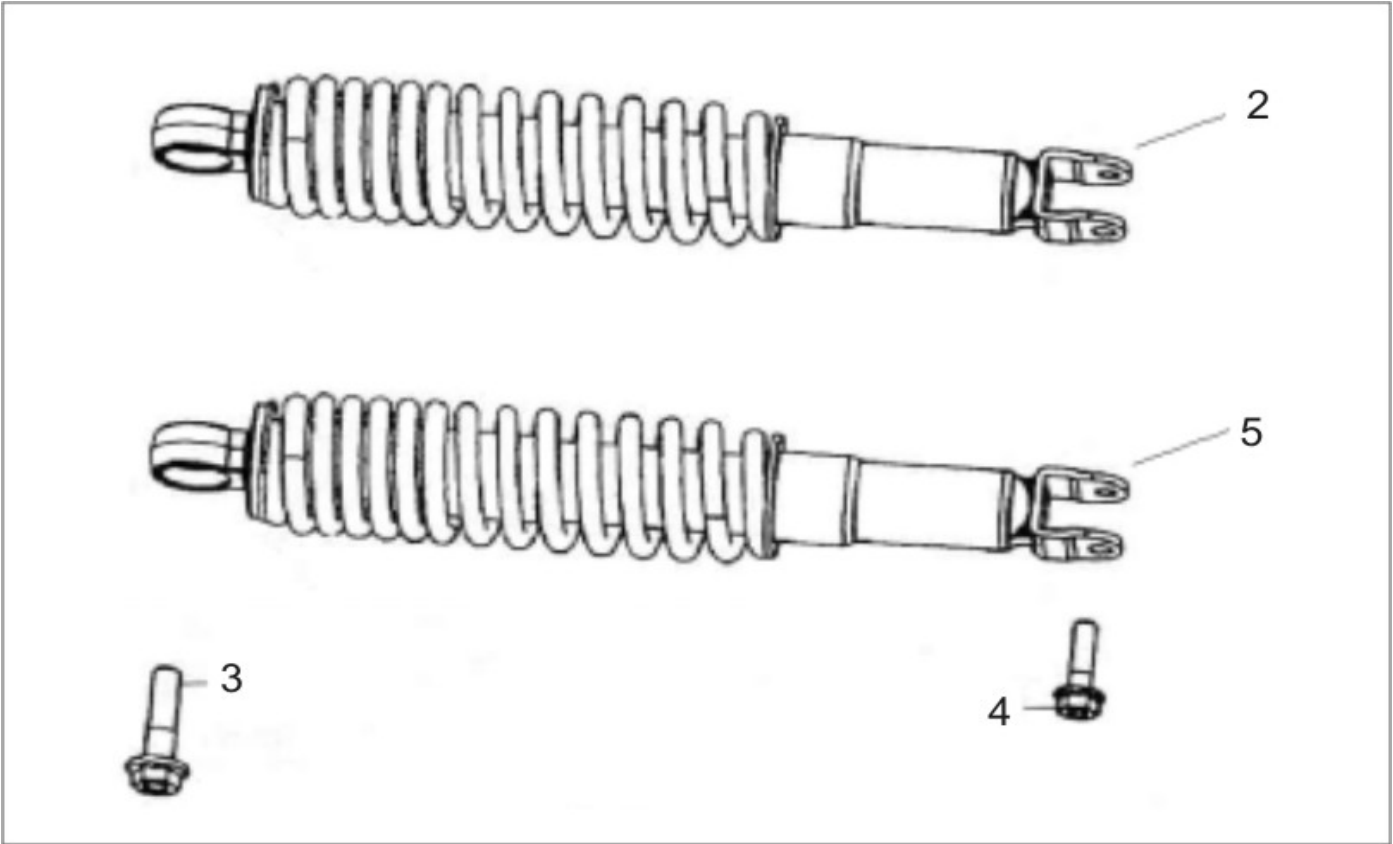
(Prices and specifications subject to change)

Item	P/N	Description
8	RS125-B12.08BLU	Belly Pan
8	RS125-B12.08SLV	Belly Pan
9	RS125-B12.09	Frame Cover, Front





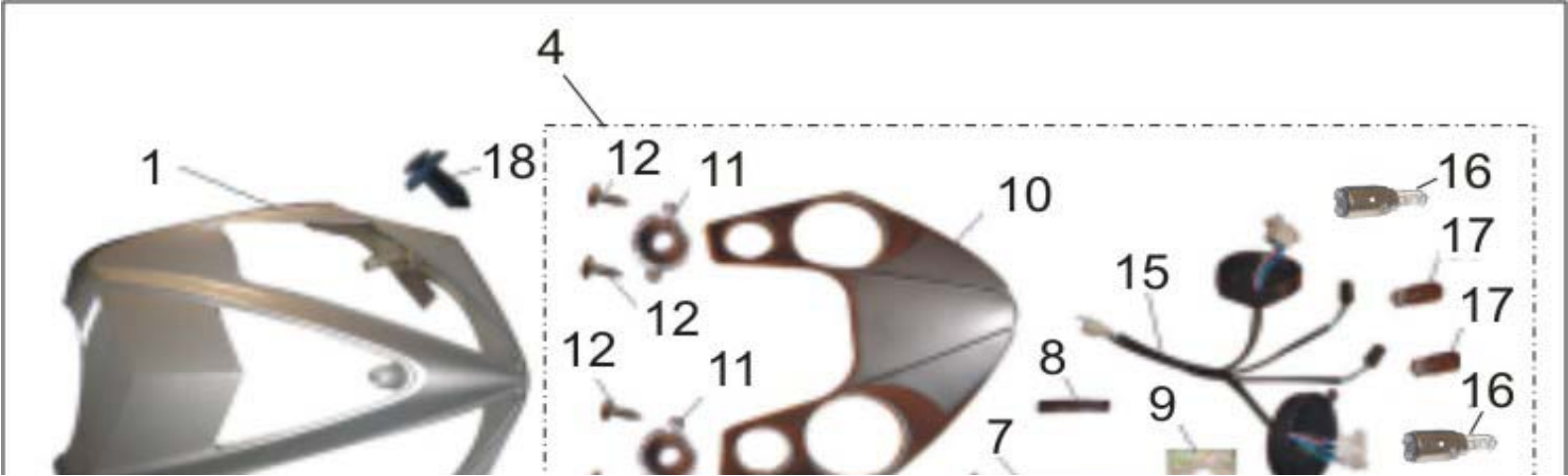
Item	P/N	Description
1	RS125-B13.01	Center Stand
3	RS125-B13.03	Cushion
7	RS125-B13.07	Side Stand
8	RS125-B13.08	Side Stand Spring
9	RS125-B13.09	Special Bolt, Side Stand
10	RS125-B13.10	Center Stand Spring

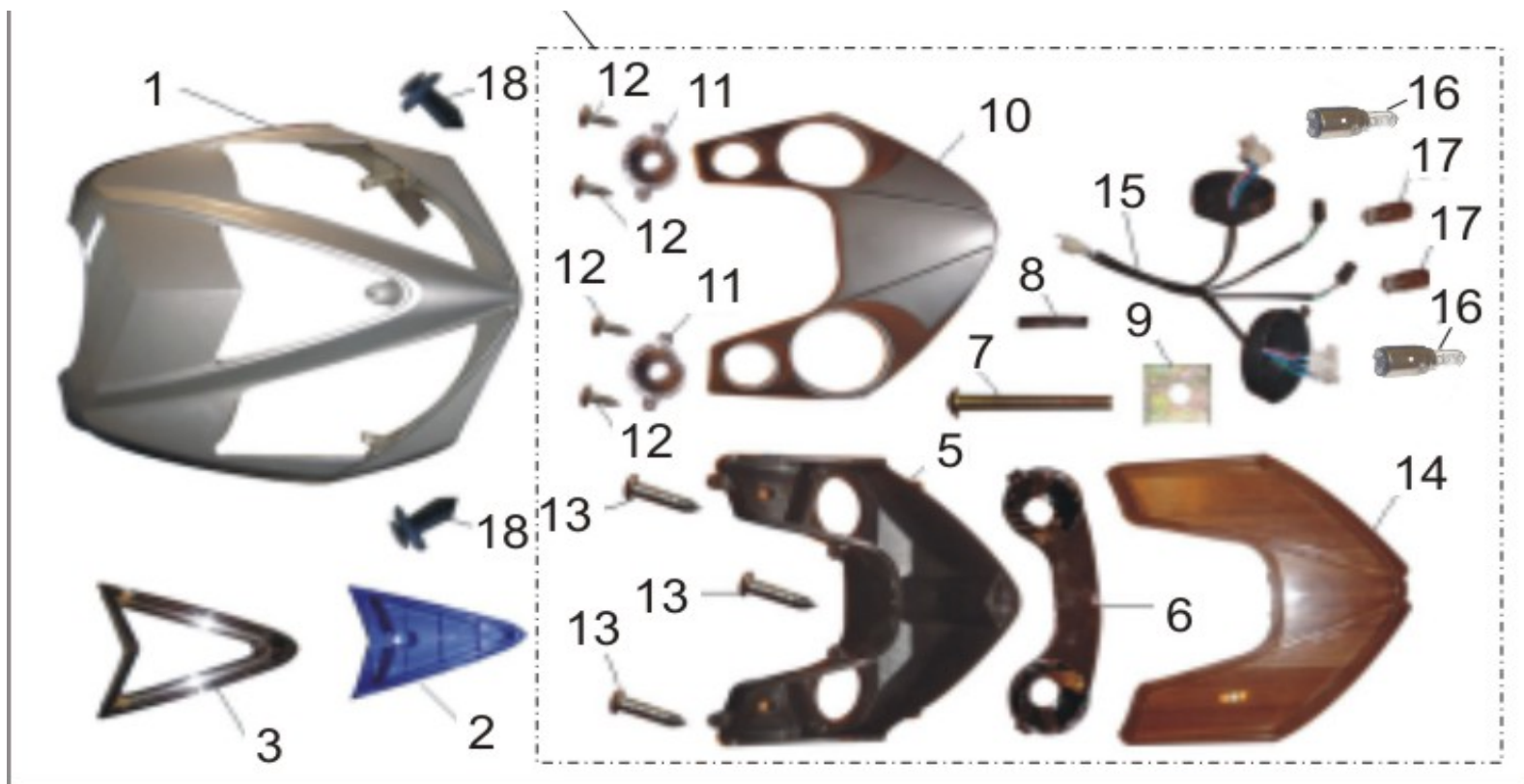


(Click line item in left column for more information)

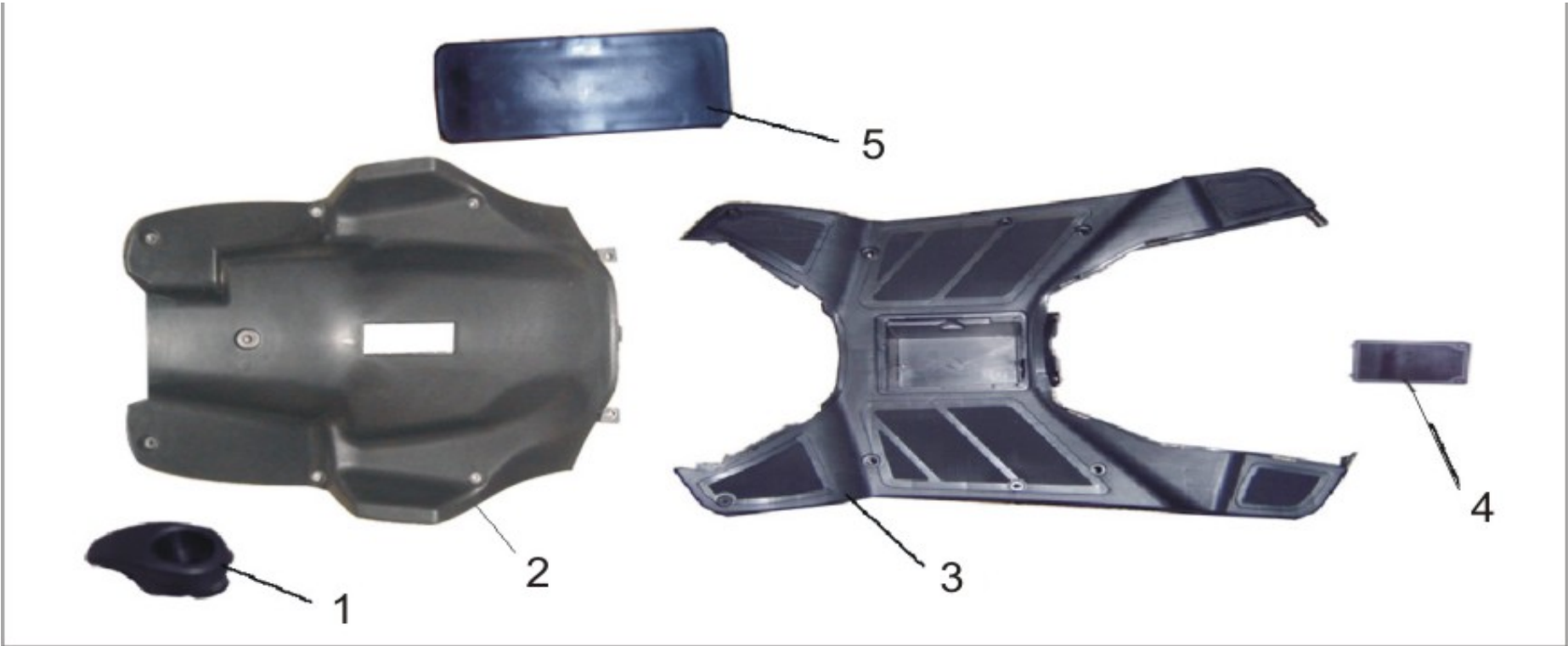
(Prices and specifications subject to change)

Item	P/N	Description
1	RS125-B14.01	Rear Shock Absorber Set





Item	P/N	Description
1	RS125-B15.01BLU	Front Panel - Blue
1	RS125-B15.01SLV	Front Panel - Silver
2	RS125-B15.02BLU	Decorative Panel - Blue
2	RS125-B15.02SLV	Decorative Panel - Silver
3	RS125-B15.03	Decorative Trim - Blue
4	RS125-B15.04	Headlight Assy
16	LS49-B22.34H	Headlight Bulb, Halogen, 12V/35W/35W, Ba20d Base
18	RS125-B15.18	Rubber Bolt

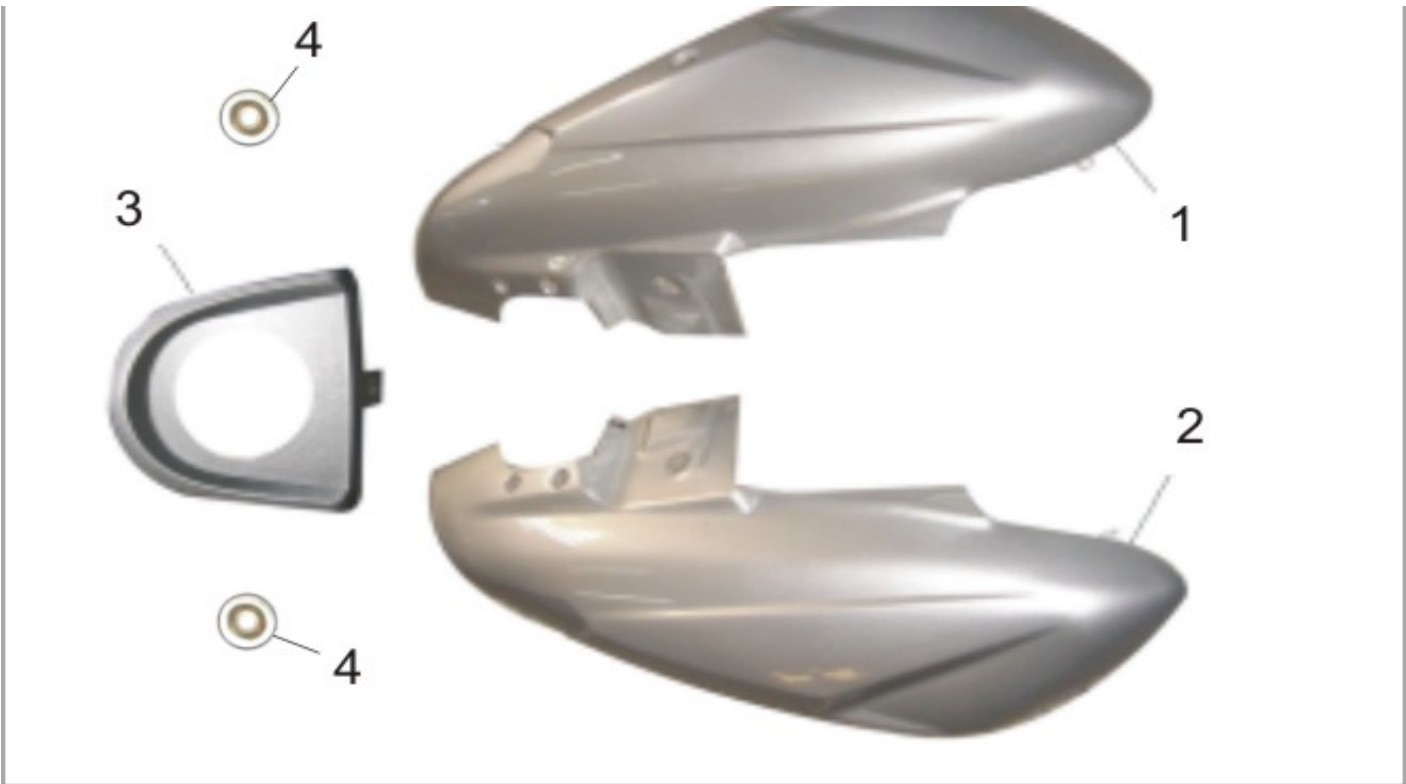


(Click line item in left column for more information)

(Prices and specifications subject to change)

Item	P/N	Description
1	RS125-B16.01	Helmet Hook
2	RS125-B16.02	Front Leg Shield
3	RS125-B16.03	Floorboard
4	RS125-B16.04	Battery Cover
5	RS125-B16.05	Vin Cover



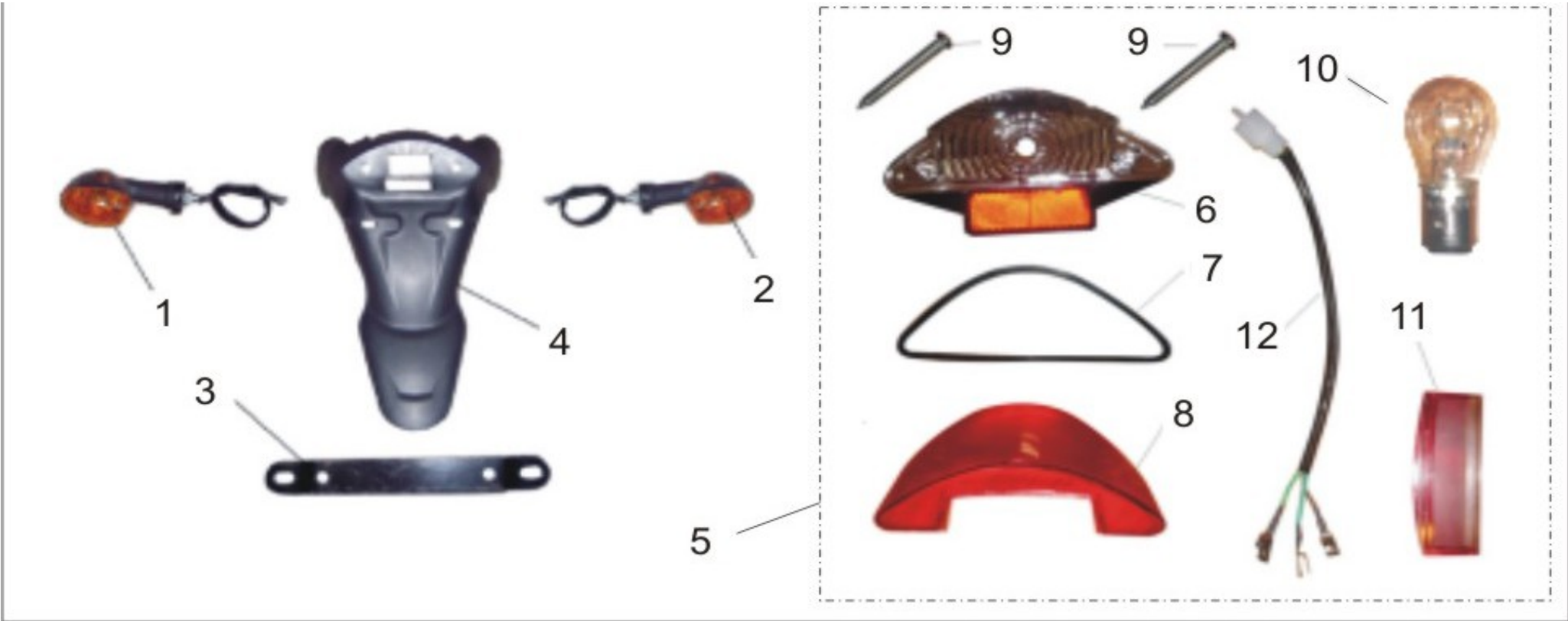


(Click line item in left column for more information)

(Prices and specifications subject to change)

Item	P/N	Description
1	RS125-B17.01BLU	Left Rear Fender - Blue
1	RS125-B17.01SLV	Left Rear Fender - Silver
2	RS125-B17.02BLU	Right Rear Fender - Blue
2	RS125-B17.02SLV	Right Rear Fender - Silver
3	RS125-B17.03BLU	Fuel Tank Cover - Blue
3	RS125-B17.03SLV	Fuel Tank Cover - Silver
4	RS125-B17.04	Decorative Plug



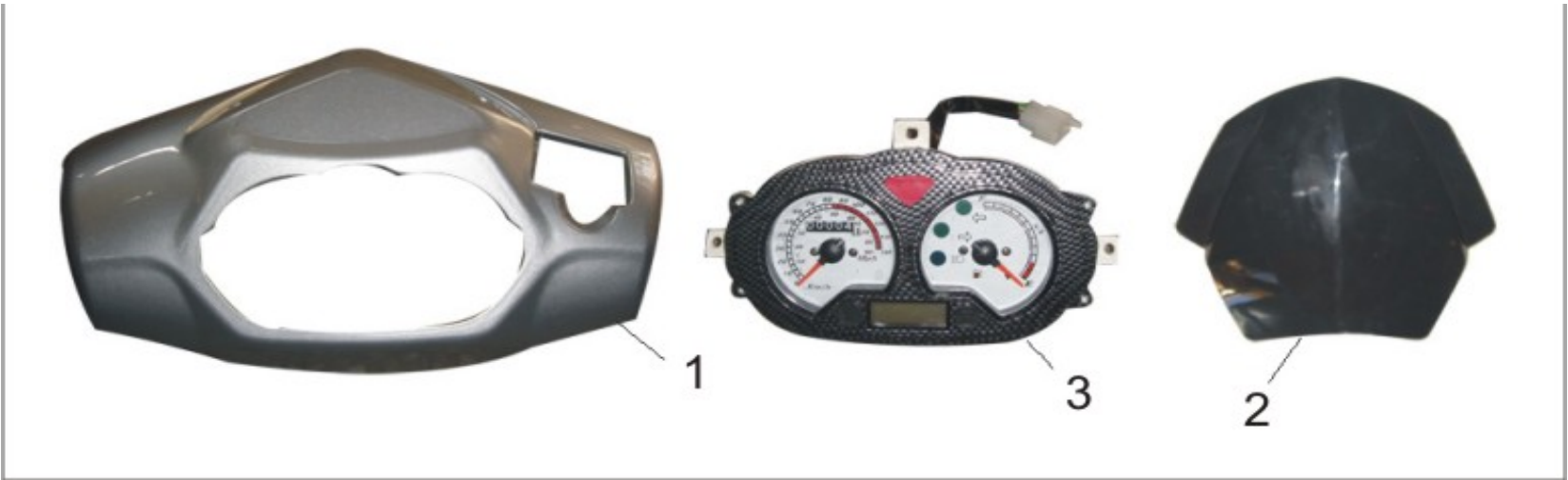


(Click line item in left column for more information)

(Prices and specifications subject to change)

Item	P/N	Description
3	RS125-B18.03	License Plate Bracket
4	RS125-B18.04	Mudflap
5	RS125-B18.05	Taillight Assy

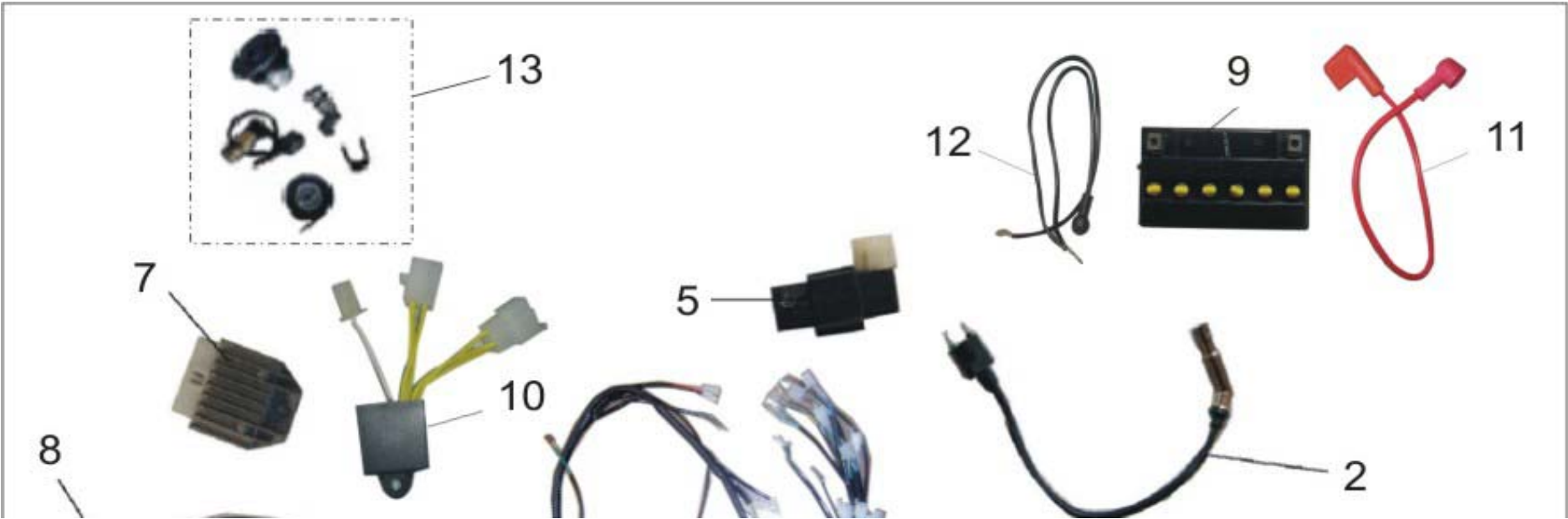


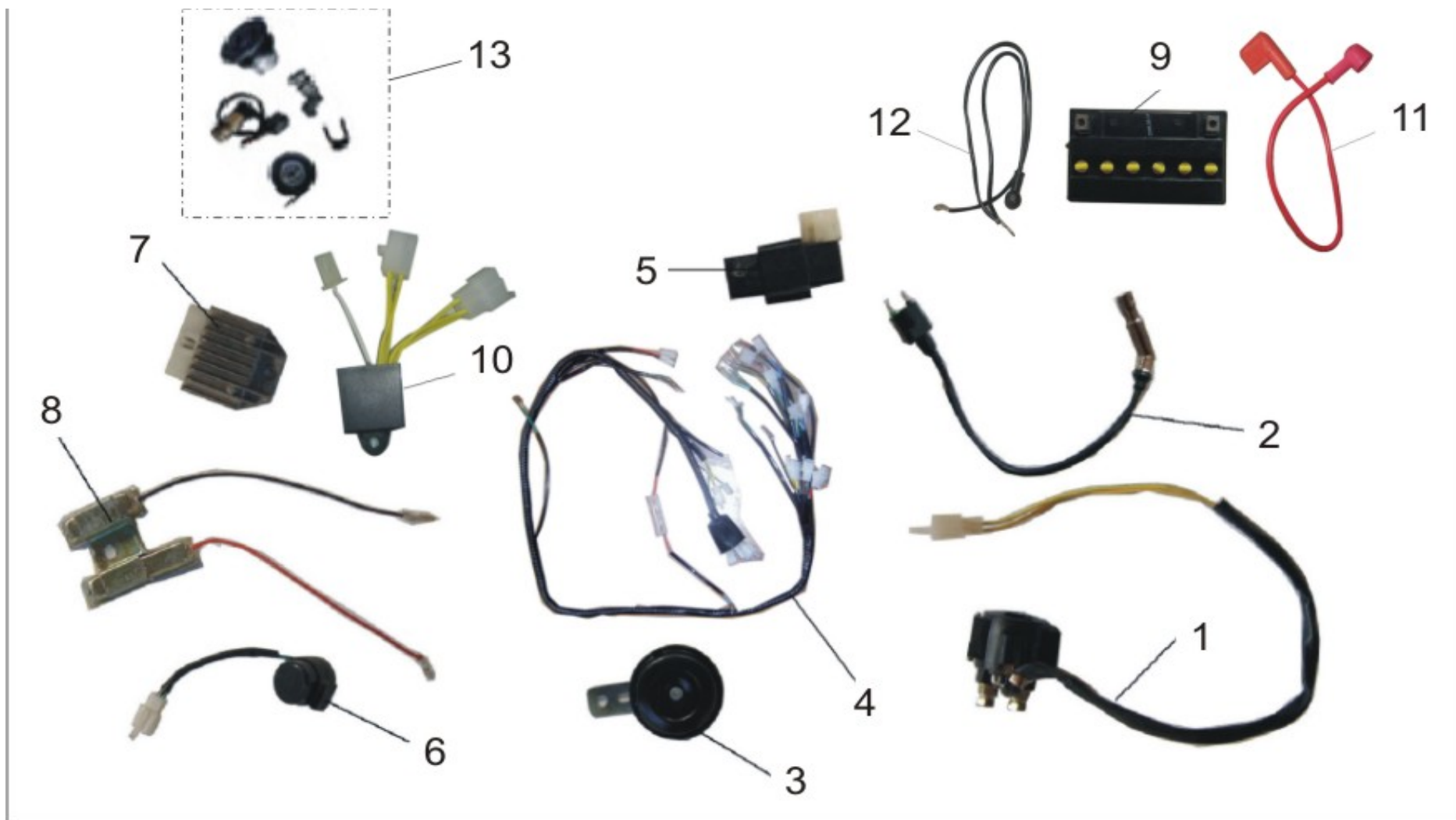


(Click line item in left column for more information)

(Prices and specifications subject to change)

Item	P/N	Description
1	RS125-B19.01BLU	Speedometer Cover - Blue
1	RS125-B19.01SLV	Speedometer Cover - Silver
2	RS125-B19.02	Instrument Panel Shield
3	RS125-B19.03	Instrument Panel





Item	P/N	Description
1	RS125-B20.01	Starter Relay
2	RS125-B20.02 More info	Ignition Coil
3	RS125-B20.03	Horn
4	RS125-B20.04	Main Wiring Harness
5	RS125-B20.05	CDI
6	RS125-B20.06	Flasher

(Click line item in left column for more information)

(Prices and specifications subject to change)

Item	P/N	Description
9	125ZT-E02.09	Pipe, Secondary Air
11	125ZT-E02.11	Gasket, Secondary Air Pipe
12	125ZT-E02.12	Cylinder Head Cover

(Click line item in left column for more information)

(Prices and specifications subject to change)

Item	P/N	Description
1	125ZT-E14.01	Right Crankcase Assembly

(Click line item in left column for more information)

(Prices and specifications subject to change)

Item	P/N	Description
3	125ZT-E15.03	Piston
4	125ZT-E15.04	Piston Pin
5	125ZT-E15.05	Woodruff Key
6	125ZT-E15.06	Circlip
7	125ZT-E15.07	First Piston Ring
8	125ZT-E15.08	Second Piston Ring
9	125ZT-E15.09	Piston Oil Ring

7	<u>RS125-B20.07</u>	Regulator/Rectifier
8	<u>RS125-B20.08</u>	Resistor
10	<u>RS125-B20.10</u>	Carburetor Controller
13	<u>RS125-B20.13</u>	Ignition Switch